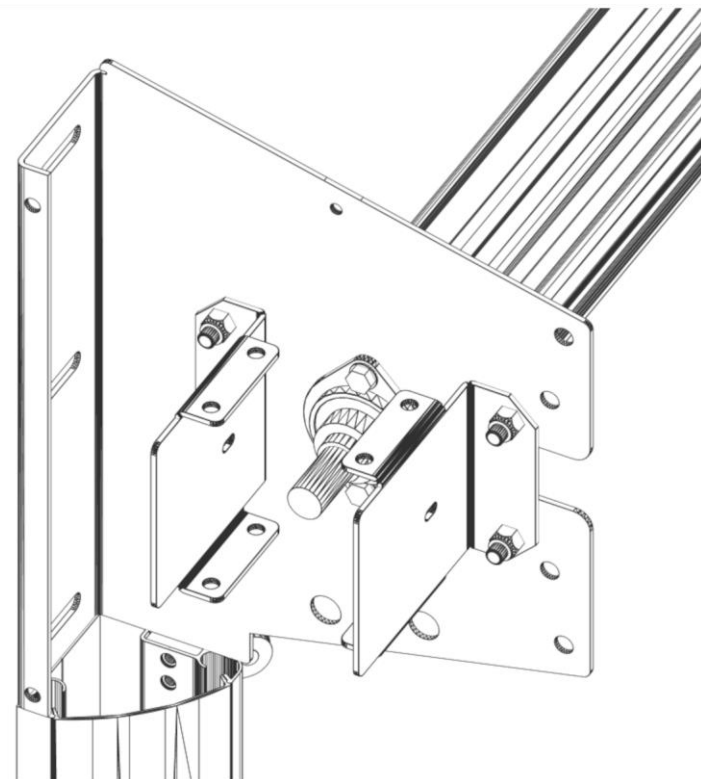
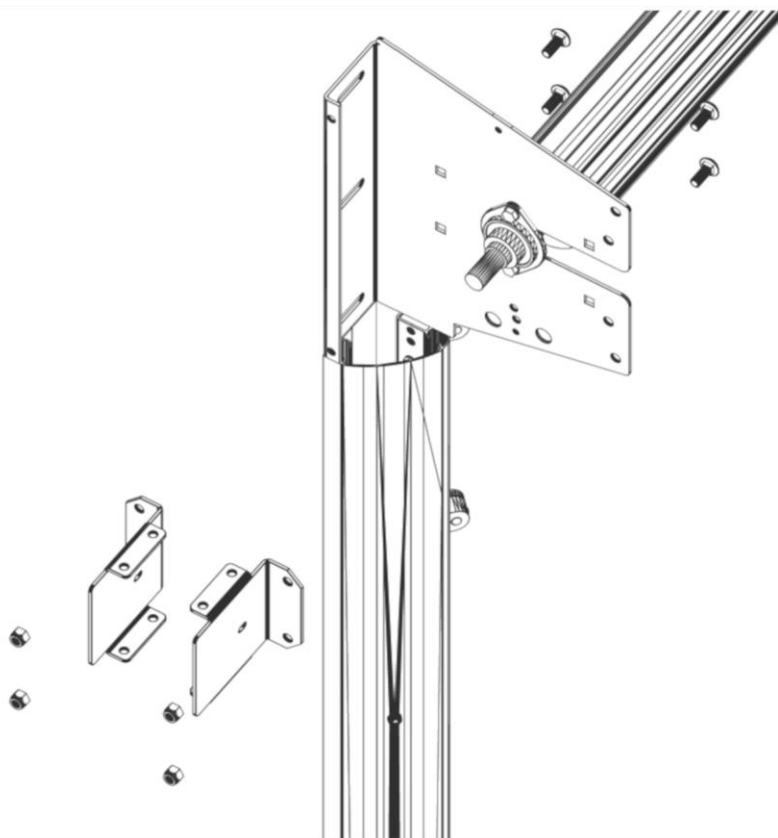
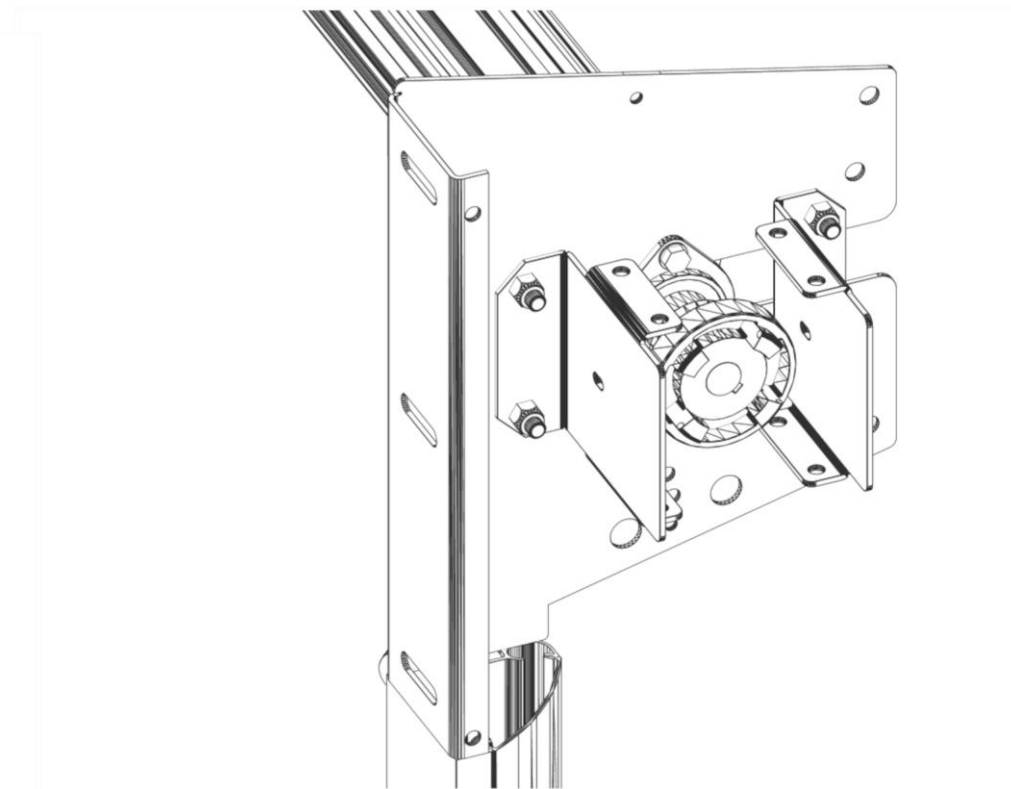
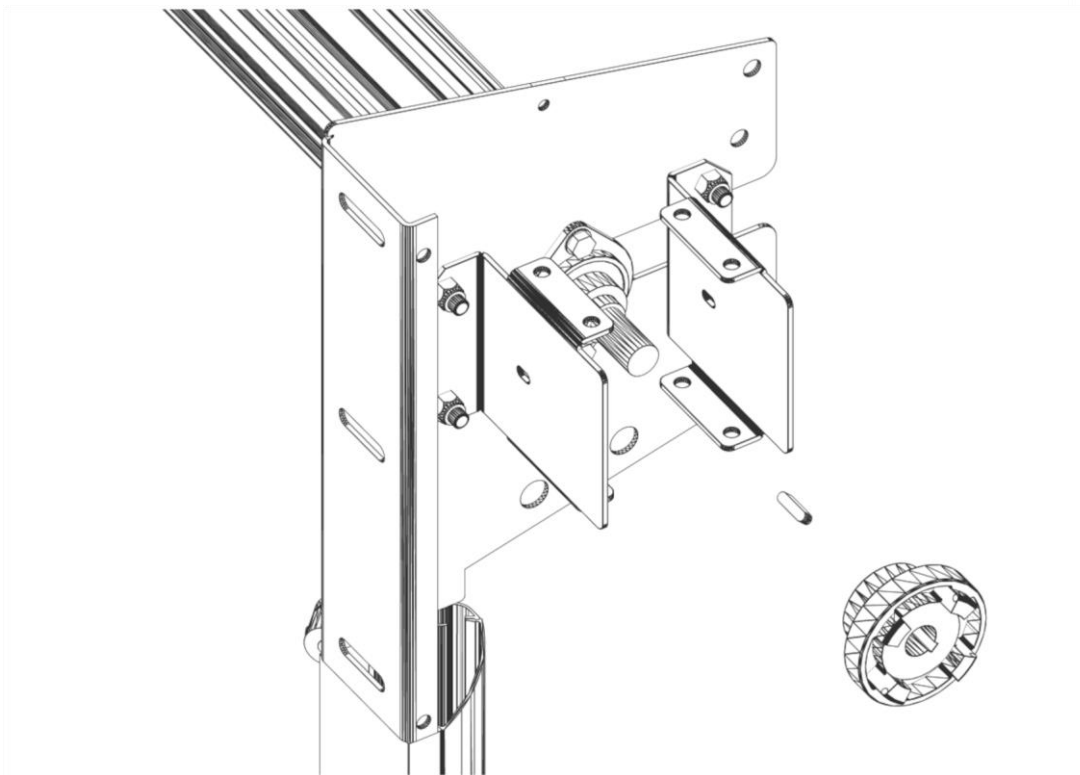


## PASSO 1



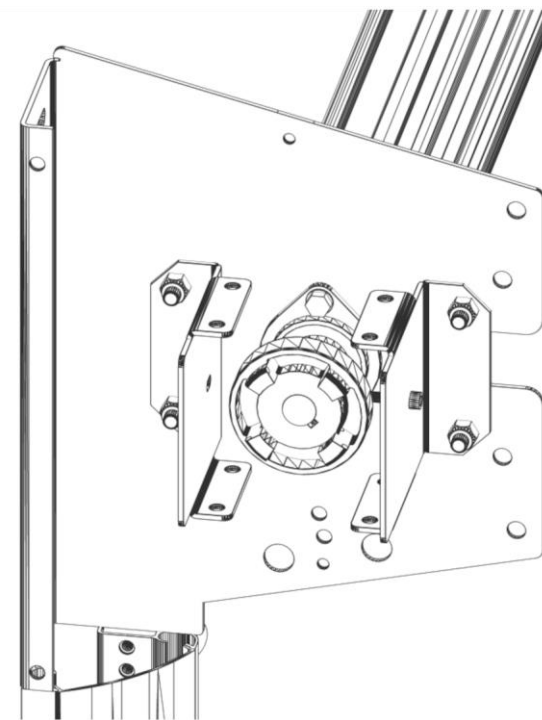
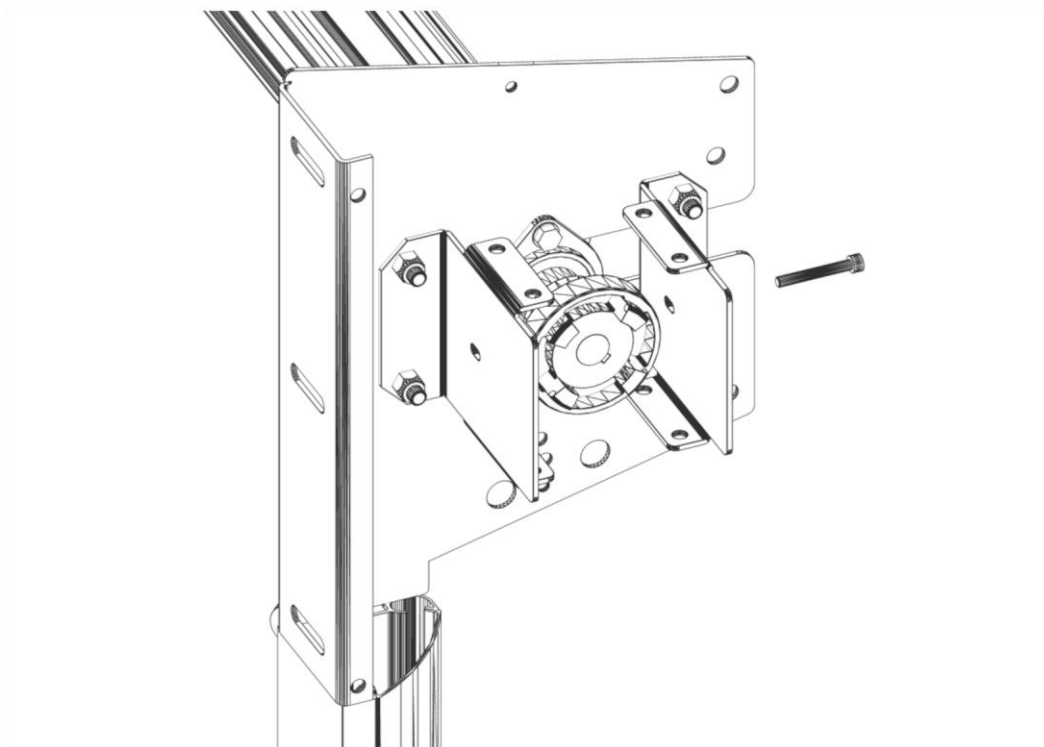
MONTAR CANTONEIRAS NO CABEÇOTE E FIXAR  
COM PARAFUSO FRANCÊS 3/8"x1" + PORCA  
COM TRAVA DE 3/8"

## PASSO 2



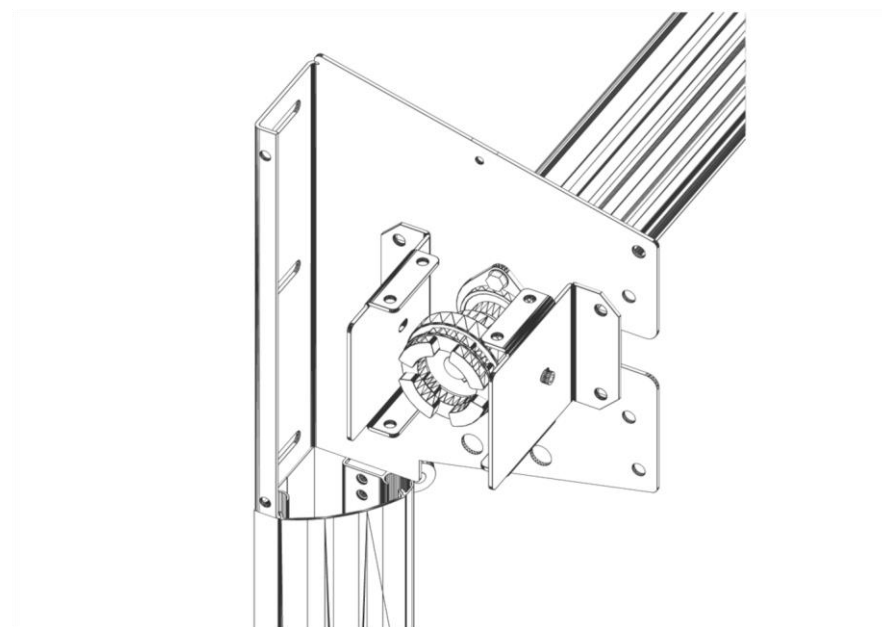
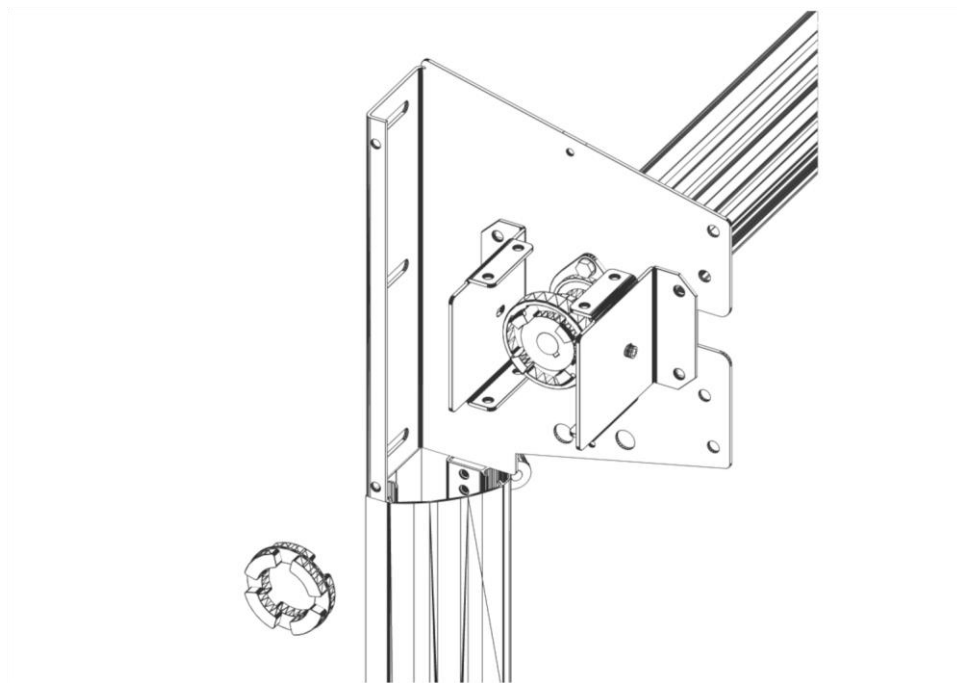
MONTAR UM DOS CUBOS DO ACOPLAMENTO  
NA PONTEIRA DO EIXO (SEM ESQUECER A  
CHAVETA 6x6x25)

## PASSO 3



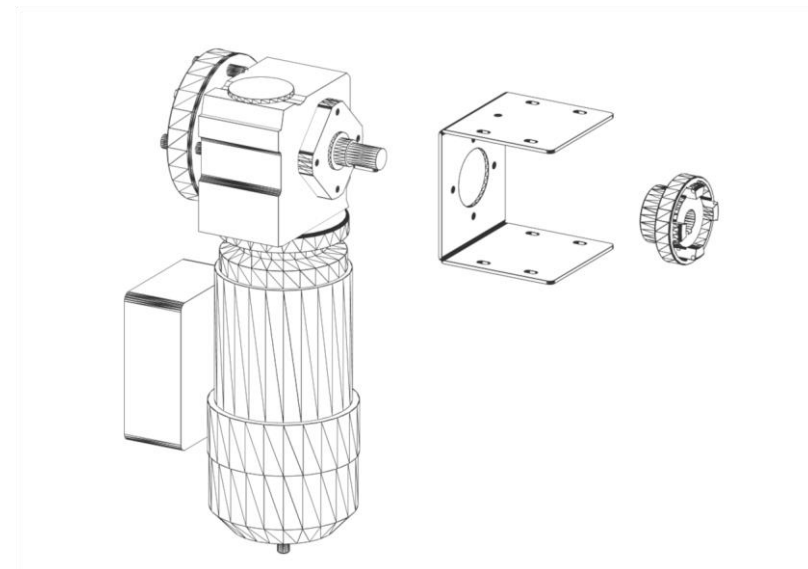
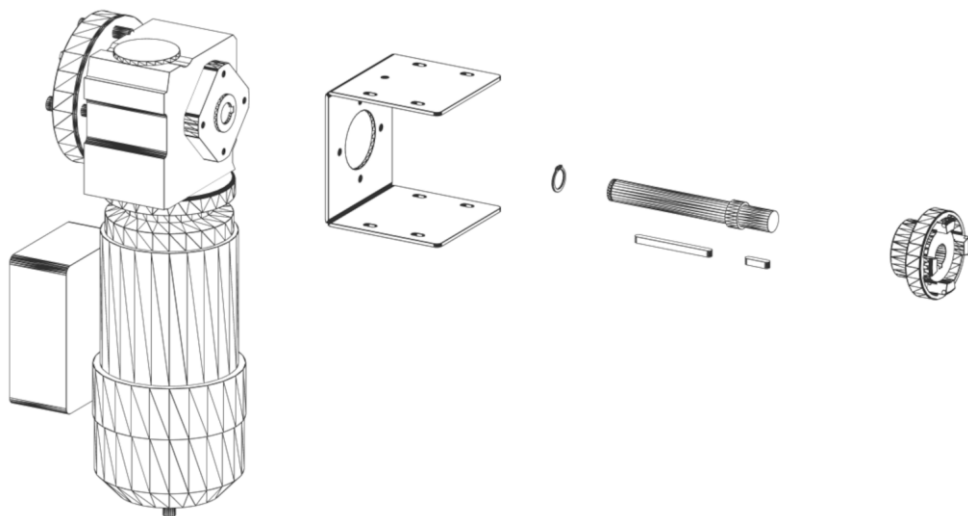
MONTAR PARAFUSO M6x45 PARA  
IMPEDIR O GIRO DO CUBO

## PASSO 4



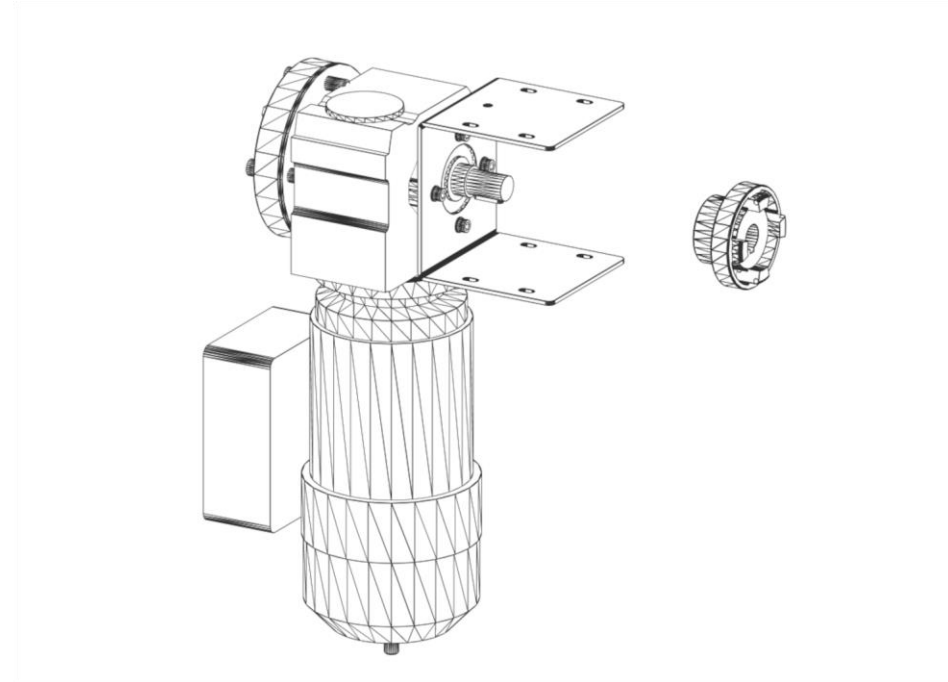
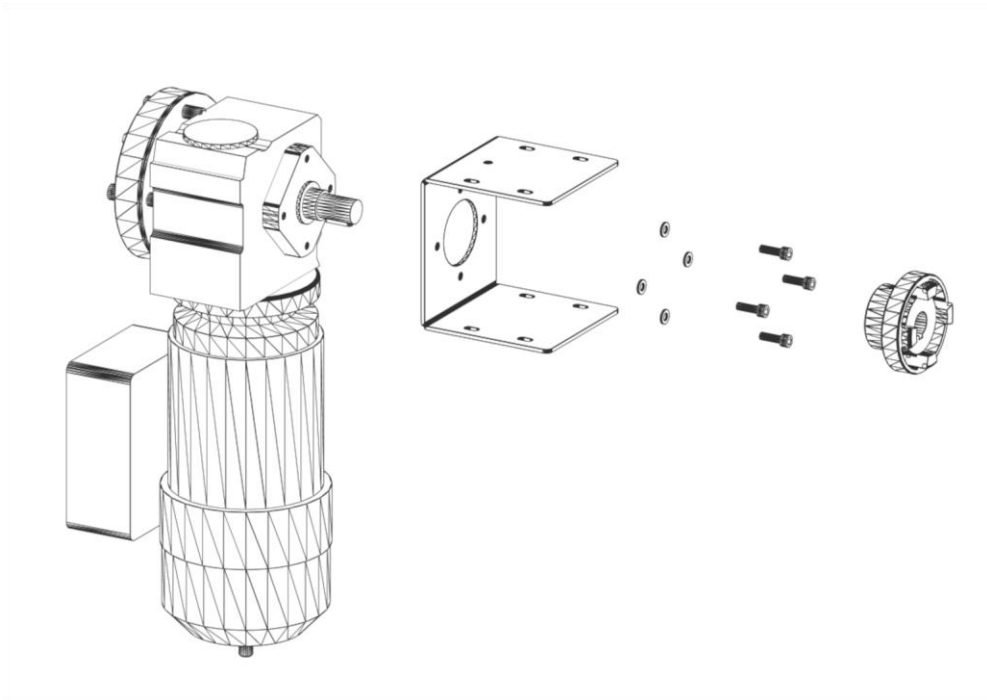
MONTAR A BORRACHA NO ACOPLAMENTO

## PASSO 5



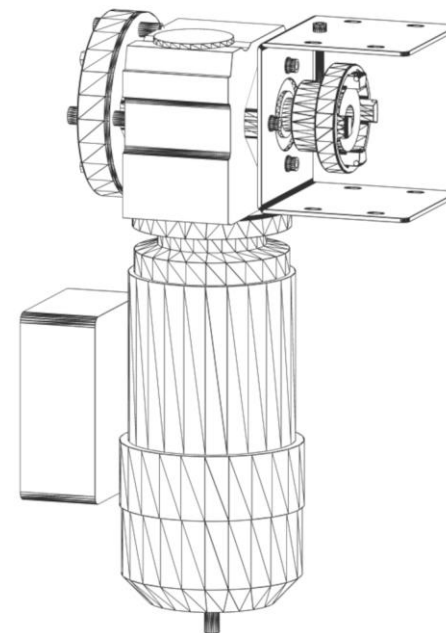
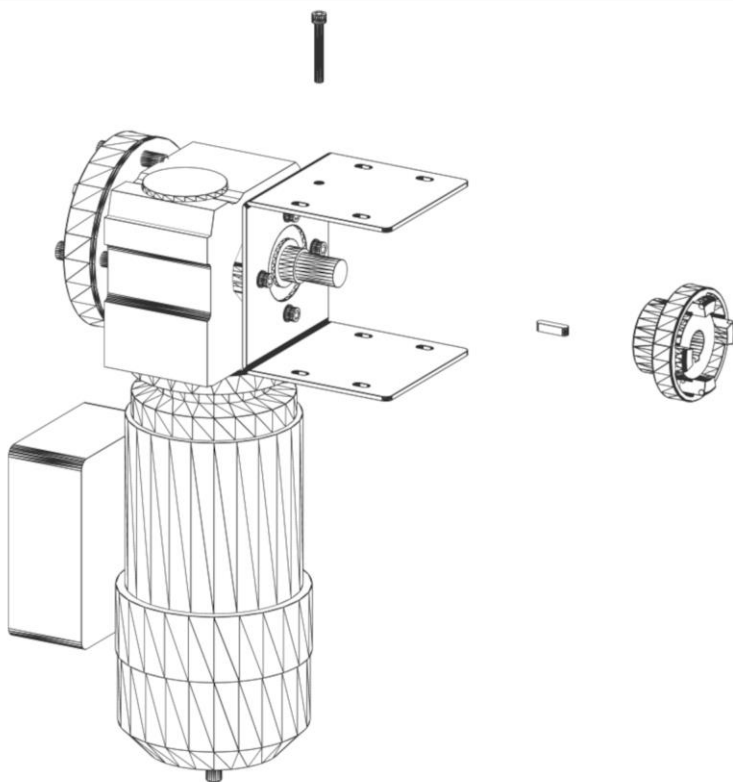
MONTAR EIXO + CHAVETAS + ANEL  
ELÁSTICO NO MOTOREDUTOR

## PASSO 6



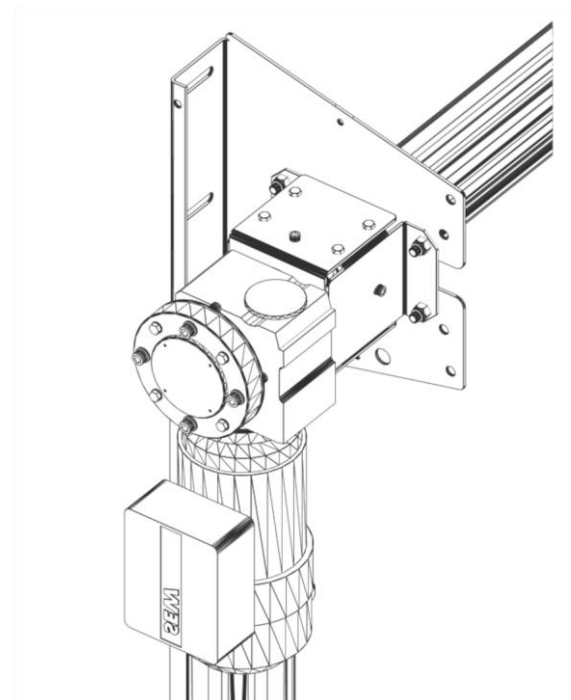
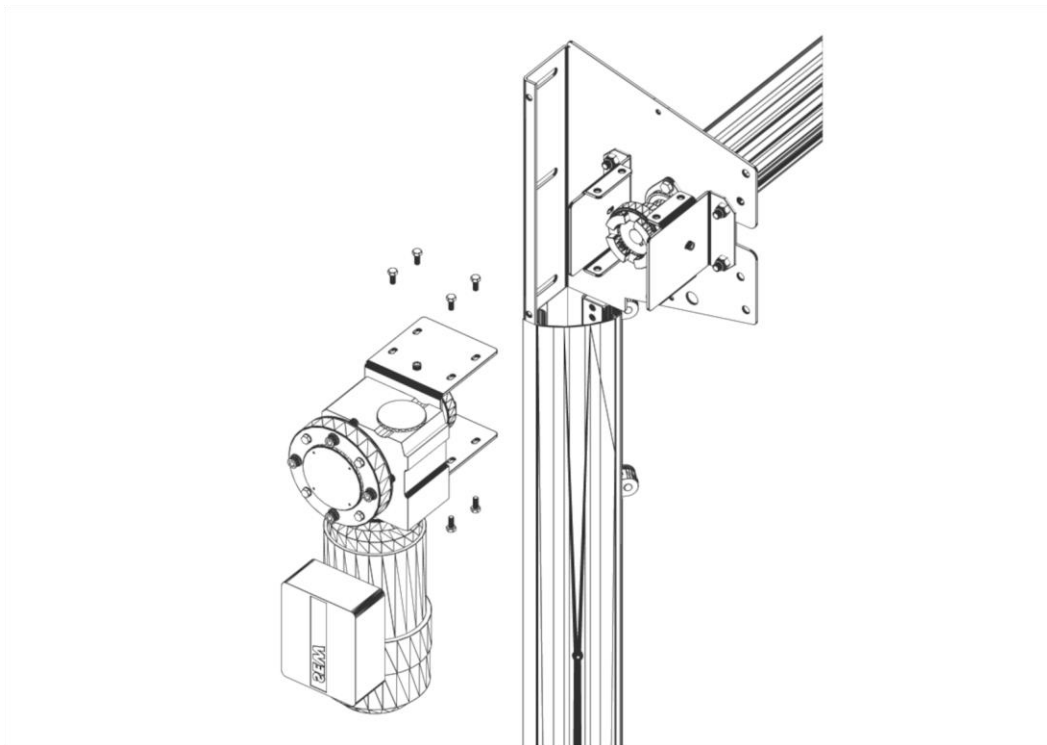
MONTAR SUPORTE + PARAFUSOS M6x20 +  
ARRUELAS DE PRESSÃO NO MOTOREDUTOR

## PASSO 7



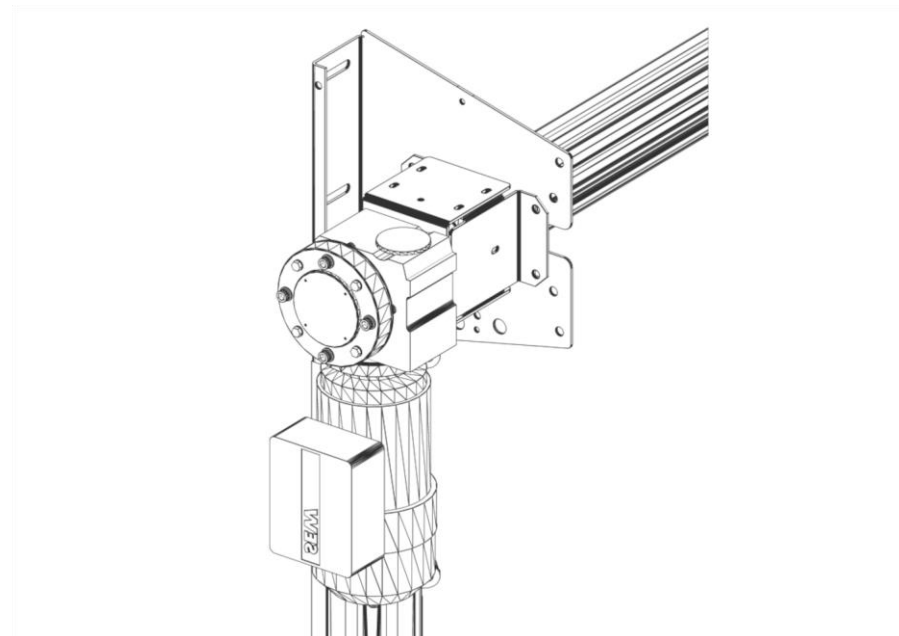
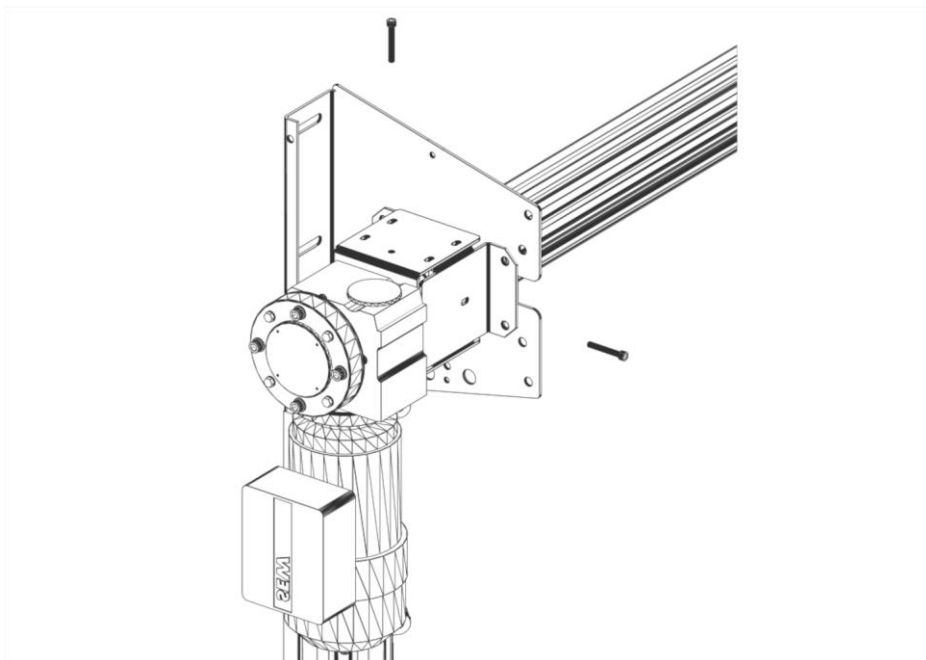
MONTAR CUBO DO ACOPLAMENTO NO EIXO DO MOTOR (NÃO ESQUECER A CHAVETA) E PRENDER COM PARAFUSO M6x45 PARA NÃO GIRAR

## PASSO 8



MONTAR MOTOREDUTOR NA PORTA  
PRENDENDO O SUPORTE NAS  
CANTONEIRAS COM PARAFUSOS M6x16

## PASSO 9



REMOVER OS PARAFUSOS M6x45 E  
LIBERAR O GIRO DO ACOPLAMENTO